

This manual is for reference and historical purposes, all rights reserved.

This page is copyright© by M. Butkus, NJ.

This page may not be sold or distributed without the expressed permission of the producer

I have no connection with any camera company

On-line camera manual library

This is the full text and images from the manual. This may take 3 full minutes for the PDF file to download.

If you find this manual useful, how about a donation of \$3 to: M. Butkus, 29 Lake Ave., High Bridge, NJ 08829-1701 and send your e-mail address so I can thank you. Most other places would charge you \$7.50 for a electronic copy or \$18.00 for a hard to read Xerox copy.

This will allow me to continue to buy new manuals and pay their shipping costs.

It'll make you feel better, won't it?

**If you use Pay Pal or wish to use your credit card,
click on the secure site on my main page.**

ZEISS IKON

Now also for the
CONTAREX:
two new ZEISS lenses
with the sensational
automatic flash control

Contarex



ZEISS
IKON

The ultimate
in cameras from
world-renowned
ZEISS IKON



Contarex

A Camera That Could Only
Come from ZEISS IKON

—m—atic



The name ZEISS IKON is synonymous with photography because ZEISS IKON has contributed with innumerable inventions and many new technical developments to the rapid growth of the photographic industry and has been a pioneer in revolutionary camera designs over several decades.

Among the great achievements of the world-renowned ZEISS IKON organization, the CONTAREX camera ranks first. This model is the ultimate in perfection of 35 mm single-lens reflex cameras.

The CONTAREX is a remarkable technological achievement. Its brilliant per-

formance is quickly appreciated by the photographer, for it easily handles the most difficult photographic problems of the amateur, the professional, or the scientist. The CONTAREX has more built-in features and advantages than many cameras offer as additional accessories.

With ZEISS TESSAR f/2.8, 50 mm
Order No. 10.2411

With ZEISS PLANAR f/2, 50 mm
Order No. 10.2401

With ZEISS B-PLANAR f/2, 50 mm
Order No. 10.2412

With ZEISS PLANAR f/1.4, 55 mm
Order No. 10.2407

New! Sensational automatic flash control

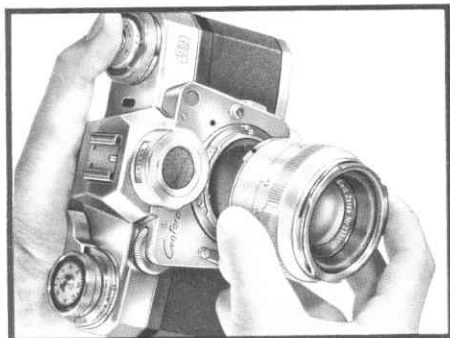
Flash without calculation! What could be easier – adjust the focusing and the aperture is automatically set. Special stops are fitted to the ring which effectively prevent any setting being made which would result in under or over exposure. This system works just as efficiently with expendable flashbulbs as with electronic flash.

This unique ZEISS IKON feature is fitted to both the ZEISS B-PLANAR f/2, 50 mm and the ZEISS B-DISTAGON f/4, 35 mm – the most suitable lenses for flash photography.

3 Standard lenses

for all photography including close-ups – without supplementary lenses

Rapid interchangeability of bayonet-mounted lenses.





The standard lens of the CONTAREX, the six-element ZEISS B-PLANAR f/2, 50 mm, ranks among the most famous lenses in the world today. Particular advantages of this lens are outstanding flatness of field and an unusually wide focusing range. With CONTAREX you can take pictures as close as 11 inches from the subject (15 inches from the focal plane). No supplementary lenses or special viewfinders are required for these amazing close-ups!

There is no need to go through laborious calculations to determine the exposure factor when taking close-up pictures. The ZEISS B-PLANAR f/2, 50 mm as well as all other 25, 35, 50 and 55 mm CONTAREX lenses features automatic exposure compensation which automatically adjusts the aperture as you focus the lens for close-up work.

Two additional standard lenses are available for the CONTAREX, the ZEISS TESSAR f/2.8, 50 mm, and the ZEISS PLANAR f/1.4, 55 mm.

The ZEISS TESSAR f/2.8, 50 mm can be used as close as 10 inches (14 inches from the film plane).

The ultra-fast ZEISS PLANAR f/1.4, 55 mm lens is ideally suited for available light as well as for night photography.

Closest focusing distance with this lens is 14 inches (18 inches from the film plane).

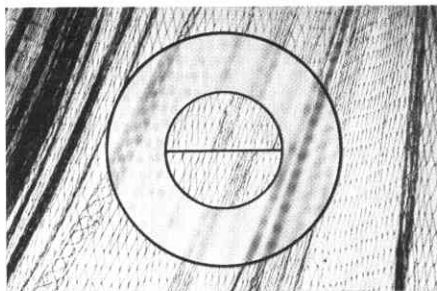
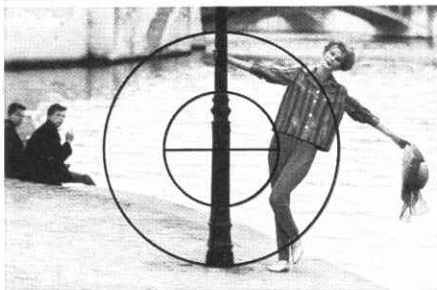
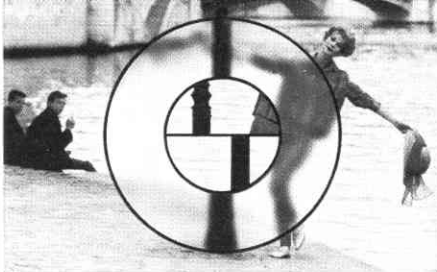
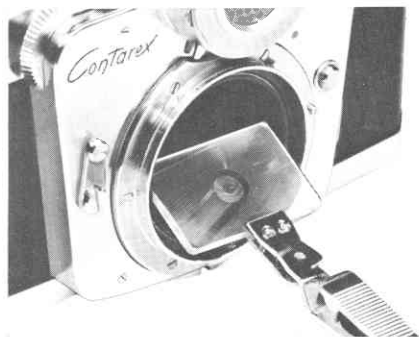
Both lenses incorporate automatic aperture correction for close-ups.

◀ These interior and close-up pictures have been taken with the same lens, the ZEISS B-PLANAR. The close-up distance was 11 inches.

The Viewfinder System

The picture is always seen as it appears in the final print or slide

NEW! The standard focusing screen with split-image rangefinder can now be interchangeable with a plain ground-glass screen or a clear-glass screen with engraved cross-lines. When it is a question of judging the overall image sharpness (important for close-up and macrophotography) the ground-glass screen will be found extremely useful. The clear-class screen is recommended for photomicrography. There is a special focusing screen with split-image rangefinder and ground-glass ring for 250 mm and longer telephoto lenses.



Whether photomicrograph, close-up or telephoto shot, the CONTAREX finder always displays the exact framing of the subject—radiantly bright, sharp, upright, unimpeded and perfectly free from parallax.

The CONTAREX embodies two focusing systems, a split-image rangefinder and a ground glass ring. The operation of the two is simultaneous. Focusing subjects with clean vertical lines is easiest when the split-image rangefinder is used, while the ground glass is ideal for focusing on subjects of a more uniform pattern – lattices, fishing nets, etc. With either system precise focusing is simply and rapidly achieved.

The pointer of the coupled exposure meter appears at the side of the viewfinder image. It does not interfere with subject observation and is easily adjusted while using the viewfinder.

The instant return mirror is another enhancing feature. Immediately after the shutter is released, the subject reappears in the viewfinder. In short, the simple to use viewfinder system of the CONTAREX is your guarantee of picture perfection.

◀ Focusing with the split-image rangefinder and the ground-glass ring.

Exposure Automation

For the very first time! A focal-plane shutter is coupled with built-in exposure meter

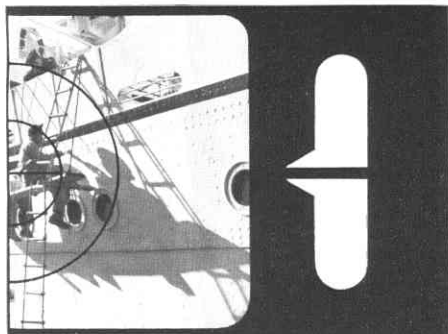
The CONTAREX is the first camera with focal plane shutter ever produced in which shutter speed and aperture settings are coupled with the exposure meter. You can pre-select either setting (shutter speed or aperture) and then find the other setting by lining up the exposure meter pointer in the viewfinder. For special work, the exposure meter can be quickly uncoupled.

The CONTAREX exposure meter has an unusually wide measuring range. In most cases, it is used for reflected light readings. By simply removing a light baffle in front of the photo-electric cell, the meter can be converted to incident-light readings. This will also make the exposure meter 16 times more sensitive than with a light baffle, a special ad-

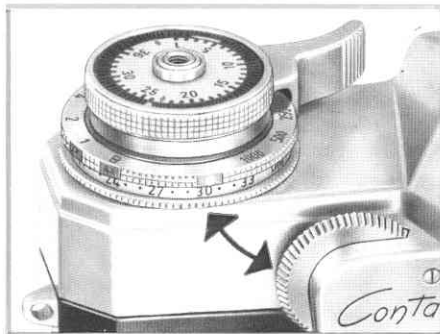
vantage for measuring in extremely poor light. The pointer of the exposure meter can be seen in the viewfinder, as well as in a window on top of the camera body. This built-in exposure meter is extremely dependable under all kinds of conditions.

Available shutter speed settings range from 1 to 1/1000th of a second, including B. The delayed-action device can be adjusted from two to ten seconds. The CONTAREX shutter is fully synchronized for flashbulbs and electronic flash. M or X type synchronization is automatically selected as you set a shutter speed. To guard against possible errors in flash synchronization, all shutter speed settings are colorcoded.

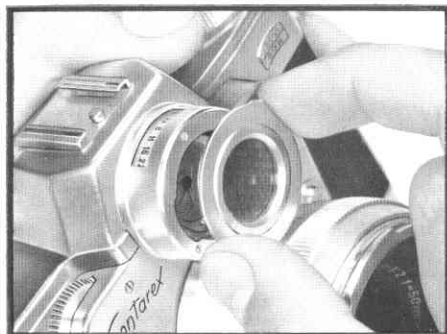
Pointer on side of viewfinder field – easy to adjust in the taking position.



Aperture or shutter speed can be pre-selected with the aperture setting wheel, or shutter speed dial, respectively.



Without the light baffle the measuring range of the exposure meter is increased by four f/stops.



Ease of Operation

Conveniently located controls guarantee fast operation

① The CONTAREX is designed to offer maximum readiness for action shots. Rapid wind lever, exposure meter adjustment, shutter speed settings and focusing are always at your finger tips for instant operation or last-minute corrections.

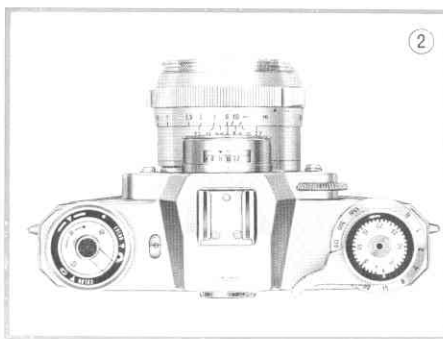
② When using the CONTAREX at waist-level, all important camera scales and dials such as shutter speed, aperture, focusing, depth of field, frame counter, film type indicator, and exposure meter pointer can be checked at a glance without moving the camera.

③ A handy rewind crank speeds up rewinding of exposed film and reduces your reloading time considerably. There's much less chance of you missing a picture with the CONTAREX.

The viewfinder is designed so that most spectacles wearers can see the entire field of view without removing their glasses. There are also corrective lenses available for those who wish to adapt the viewfinder to their own eye prescription.

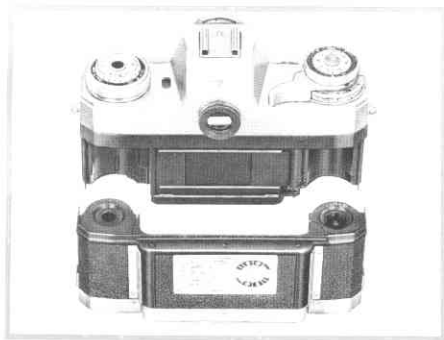
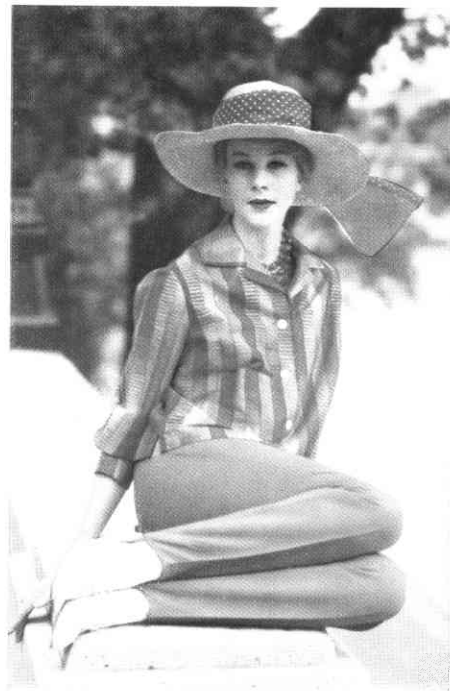
The frame counter indicates the number of unexposed frames.

No calculations are required to determine the number of pictures remaining. This holds true regardless of the number of exposures in the magazine.



The Interchangeable Magazine Back

From Black-and-White to Color in a few seconds



Every amateur has experienced the disappointment of missing a perfect color shot because his camera was loaded with black-and-white film; or when there was a good opportunity for a good artificial light shot, his camera was loaded with daylight film.

Those disappointments are over. The novel interchangeable back for the CON-TAREX makes it possible to exchange partially exposed rolls of film in seconds, in full daylight and without the loss of a single frame!

The interchangeable back provides a flexibility which heretofore was obtainable only by using additional camera bodies. With interchangeable backs you save the cost of complete camera bodies and have less equipment to carry.

In industrial and scientific photography, several lab technicians may use the same camera. By using interchangeable backs they can retain their film and have it processed at their own convenience.



The 15 Interchangeable ZEISS Lenses

21 mm to 1000 mm focal lengths!

All 15 interchangeable ZEISS lenses for the CONTAREX can be changed quickly and easily by means of a positive positioning and securing bayonet mount. There is no need for shutter tensioning precautions. When inserting a particular lens, the aperture values not applicable to that lens are automatically excluded.

All CONTAREX lenses have been matched for even color rendering by a special coating process. For example, when shooting one particular subject with various CONTAREX lenses on color film, all pictures will show the same color characteristics regardless of the focal length of the lens.

Technical data for all 15 CONTAREX lenses are given in this table.

* with automatic flash control.

** automatic aperture correction for close-ups.

*** the subject-image ratio can be increased by using ZEISS PROXAR supplementary lenses.

More information on the ZEISS S-PLANAR and the ZEISS Universal TESSAR is given on page 17.

◀ Insect in flight, one of the most difficult subjects, photographed with the CONTAREX.

	Angle of View	Aperture Control	Focusing Range (Subject-Film Dist.) Infinity to	Largest Scale of Reproduction without Accessories	Smallest Subject Field to fill the Frame without Accessories***
Zeiss Biogon f/4.5 21 mm	90°	Normal	39½ in.	1: 45	40 x 63 in.
Zeiss Distagon f/2.8 25 mm	80°	Aut. spring-load, pre-selector iris**	7 in.	1: 2.8	3 x 4¼ in.
Zeiss B-Distagon f/4, 35 mm *	63°	Aut. spring-load, pre-selector iris**	15 in.	1: 8	7½ x 11 in.
Zeiss Distagon f/2 35 mm	63°	Aut. spring-load, pre-selector iris**	9 in.	1: 3.5	3½ x 5 in.
Zeiss Tessar f/2.8 50 mm	45°	Aut. spring-load, pre-selector iris**	15 in.	1: 4.7	4⅓/₁₆ x 7⅞/₃₂ in.
Zeiss B-Planar f/2, 50 mm *	45°	Aut. spring-load, pre-selector iris**	15 in.	1: 5.3	5 x 7 in.
Zeiss Planar f/1.4 55 mm	41°	Aut. spring-load, pre-selector iris**	17¾ in.	1: 6	5½ x 8¼ in.
Zeiss Sonnar f/2 85 mm	28°	Aut. spring-load, pre-selector iris	31½ in.	1: 7.3	6¾ x 10¼ in.
Zeiss Sonnar f/4 135 mm	18°	Aut. spring-load, pre-selector iris	4 feet	1: 6.7	6 x 9⅞ in.
Zeiss Olympia-Sonnar f/2.8 135 mm	18°	Aut. spring-load, pre-selector iris	4 feet	1: 6.7	6 x 9⅞ in.
Zeiss Olympia-Sonnar f/4 250 mm	10°	Aut. spring-load, pre-selector iris	98 in.	1: 8	7 x 11 in.
Zeiss Mirotar f/4.5 500 mm	5°	—	13 feet	1: 5.5	5 x 7½ in.
Zeiss Mirotar f/5.6 1000 mm	2.5°	—	40 feet	1: 10	9 x 14 in.
50 mm-Obj.+Zeiss Photo Monocular (f/16 400 mm)	6.3°	—	4 feet	1: 2.2	2 x 3 in.
Zeiss S-Planar f/4 50 mm	45°	Aut. spring-load, pre-selector iris**		1: 13 1: 2.8	12 x 18 in. 2½ x 3¾ in.
Zeiss Tessar f/3.5 115 mm	21°	Pre-set diaphragm	3 feet 17¾ in.	1: 5 1: 1	5¼ x 8 in. 2⅞/₃₂ x 1⅞/₈ in.





Wide-angle Lenses

(each with cross-section and comparison photograph)



B-DISTAGON 1:4/35 mm
9 in.



DISTAGON 1:2/35 mm
9 in.



B-PLANAR 1:2/50 mm
1 13/4 in.



DISTAGON 1:2.8/25 mm
7 in.



BIOCON 1:4.5/21 mm
3 9/16 in.



ZEISS BIOCON f/4.5, 21 mm

The angular field of view of this extreme wide-angle lens is 90 degrees. It covers nearly six times as large a field as the 50 mm lens.

New: ZEISS DISTAGON f/2.8, 25 mm

Despite its extremely short focal length, this new wide-angle lens permits reflex focusing and viewing. A special viewfinder is not required.

ZEISS B-DISTAGON f/4, 35 mm

This wide-angle lens has a long helical mount for close-ups as near as 11 inches (15 inches from the film plane). It incorporates both automatic aperture correction and automatic flash control.

New: ZEISS DISTAGON f/2, 35 mm

This is an extremely fast wide-angle lens. It is particularly suitable for taking interiors without flash. The closest focusing setting is 5 inches (9 inches from film plane).

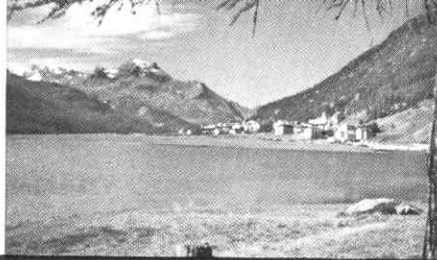
For comparison:

A picture taken with the ZEISS B-PLANAR f/2, 50 mm, which is a standard lens.

4 Telephoto Lenses



PLANAR 1:1.4/55 mm
1 7/8 in.



For focal length comparison:

An outdoor scene taken with the ultra-fast ZEISS PLANAR f/1.4, 55 mm and three telephoto lenses.



SONNAR 1:2/85 mm
3 1/2 in.



ZEISS SONNAR f/2, 85 mm

Maximum definition, amazing brilliance and perfectly even illumination of the image field even at full aperture, these are the characteristics of this high-speed telephoto lens. It is ideal for portraits, sports and stage photography, as it yields a large image free from close-up distortion.



SONNAR 1:4/135 mm
4 feet



OLYMPIA-SONNAR
1:2.8/135 mm
4 feet



New:

ZEISS OLYMPIA-SONNAR f/2.8, 135 mm

This fast telephoto lens produces pictures of extremely crisp definition. It is ideal for sports and wild-life photography where maximum sharpness at wide lens openings is essential.

ZEISS SONNAR f/4, 135 mm

This is a less expensive version of the OLYMPIA-SONNAR f/2.8, 135 mm.



OLYMPIA-SONNAR
1:4/250 mm
8 ft. 2 in.



New:

ZEISS OLYMPIA-SONNAR f/4, 250 mm

This long telephoto lens with automatic preset diaphragm is designed for action shots. The smooth rapid focusing mount with convenient grip permits instantaneous focusing adjustments and it also facilitates hand-held shots. It is primarily used to cover sports events, or for taking close-up shots of animals.

2 Mirror-telephoto lenses



TESSAR f/2.8, 50 mm
1.5 in.



MIROTAR f/4.5, 500 mm
13 feet



MIROTAR f/5.6, 1000 mm
40 feet



For focal length comparison:

This picture was taken with the ZEISS TESSAR f/2.8, 50 mm standard lens. By comparing it with the following two telephoto shots, you will notice the tremendous amount of magnification which these two Mirotar lenses offer.

New: ZEISS MIROTAR f/4.5, 500 mm

A long telephoto lens based on a mirror-reflex design. Its outstanding features are the complete absence of chromatic aberration which means unsurpassed definition, very short over-all length of lens mount and comparatively wide aperture.

New: ZEISS MIROTAR f/5.6, 1000 mm

This telephoto lens is based on the same principle as the 500 mm Mirotar. It also offers an amazing degree of sharpness and a short over-all length, a characteristic of catadioptric lenses.



CARL ZEISS PHOTO MONOCULAR for photography and visual observation. With an inexpensive adapter ring you can fit the Photo Monocular 8 x 30 B to CONTAREX cameras. The Monocular increases the 50 mm standard focal length to 400 mm. This small and compact Monocular can also be used as a telescope for visual observation.

www.orphancameras.com

CONTAREX Accessories

Practical in all respects

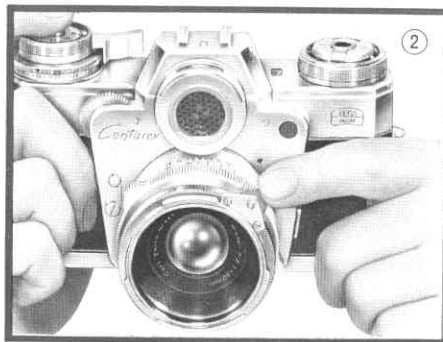
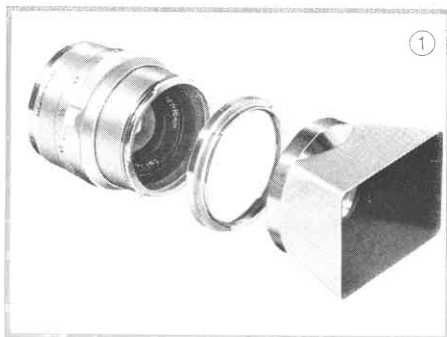
A carefully planned and well-designed camera system includes flexible accessories. For example: one set of 56 mm filters, including Contapol polarizing filter and Proxar close-up lenses fits all CONTAREX lenses from 21 to 135 mm focal length. The CONTAREX also features a very unique viewfinder system which makes separate viewfinders and other near-focusing devices obsolete. The CONTAREX viewfinder shows the exact image for lenses of any focal length including close-up lenses, without additional attachments. There is only one exception, the viewfinder for the 21 mm super wide angle lens.

① **All filters and Proxar lenses**, including Contapol, have front and rear bayo-

net mounts. Therefore, they can be used in any combination to achieve best results. If necessary, a lens shade can also be attached for best possible protection against reflections or lens flare.

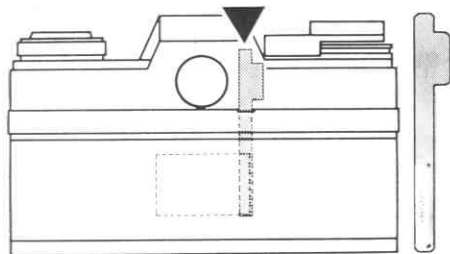
② **The Contapol polarizing filter** fits over the camera lens and its effect can be seen in the CONTAREX viewfinder. By turning the small adjustment wheel on the filter mount, you can select the desired degree of polarization.

③ **The interchangeable focusing screens** are stored dust-free in a practical container, in company with special tweezers. The most suitable focusing screen is thus always at hand for each exposure.

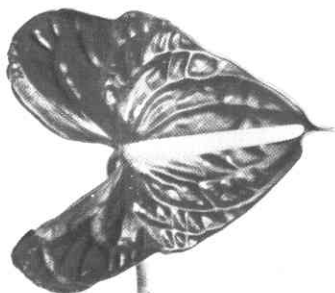


NEW! Data Recording on Film

Technical data, code numbers or dates can now be recorded on the film at the time of exposure. You simply write the pertinent information on a plastic recording strip, which is inserted into a slit in the back of the CONTAREX camera. Data on strip will be clearly visible within the actual picture area of the processed negative or transparency. No more time-consuming marking of finished slides or prints!



Anthracinum



The CONTAREX is widely used

by professionals and specialists to solve the most intricate photographic problems

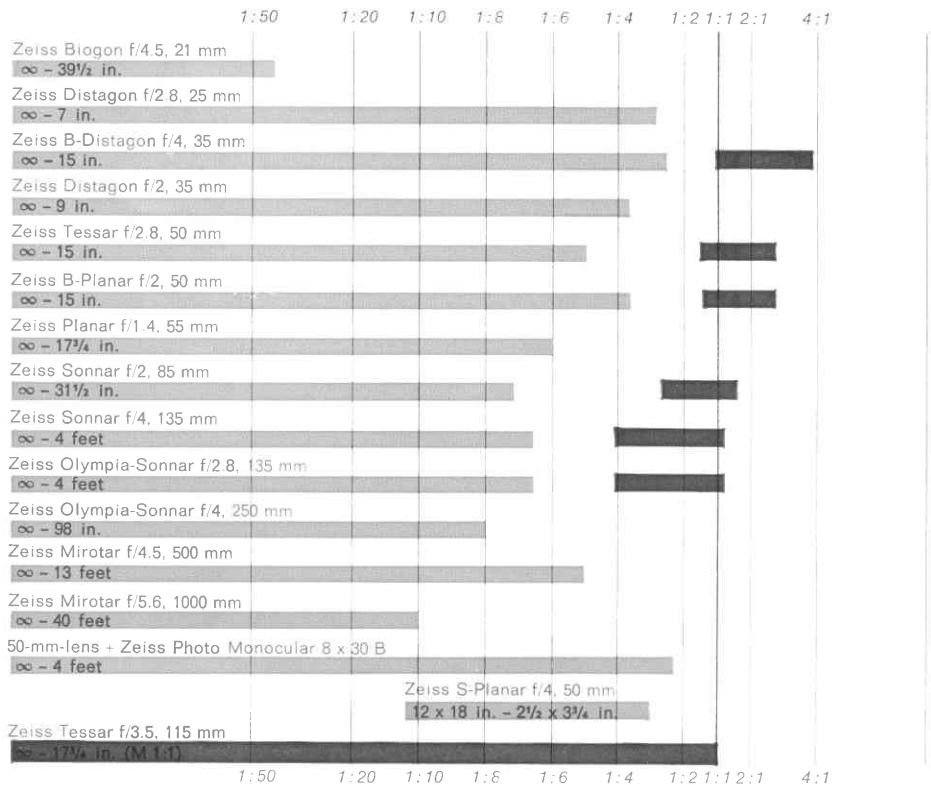
35 mm cameras are now being used in scientific, medical, industrial, press and even studio photography. The requirements of these professionals are rigid and most diversified; unsurpassed quality, greater flexibility, ruggedness, utmost dependability are an absolute necessity. The CONTAREX offers all these features and many more. Therefore, it is not surprising that more professional people all over the world select CONTAREX cameras for their daily research work.

Special Reproduction Lens, ZEISS S-PLANAR f/4, 50 mm, is designed to offer needle-sharp definition for copy work. The focusing mount of this lens is calibrated to show exact scales of reproduction. The entire range includes ratios 1:2.8 to 1:13, which are equivalent to the following field sizes: 3" x 4" to 12" x 17". There is no better lens for critical copy work than this ZEISS S-PLANAR.

ZEISS TESSAR f/3.5, 115 mm, a short-barrel lens to be used exclusively with the Focusing Bellows Attachment. This combination focuses from infinity down to same size (ratio 1:1). The CONTAREX Focusing Bellows Attachment, a double-

track unit, greatly facilitates critical focusing and accurate framing of the subject. By using CARL ZEISS Luminar objectives, instead of regular CONTAREX lenses, magnifications up to 12 x can be obtained.

An additional bellows lens hood can also be used as a special effects box. Accessories for copying and photomicrography are described later on in this brochure.

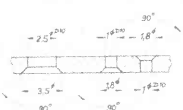


Scale of Reproduction
Focusing range of
lenses only

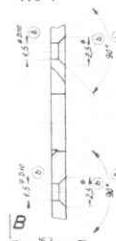
Focusing range of 2 inch
(50 mm) lens plus 20 cm
Zeiss Proxar lens

Focusing range of the lenses with
focusing bellows and full lens
extension

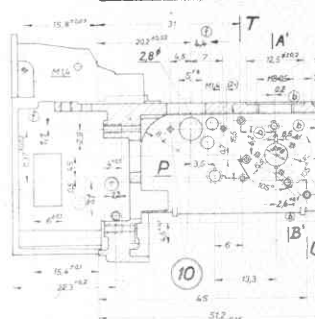
Schnitt P-Q
M5:1



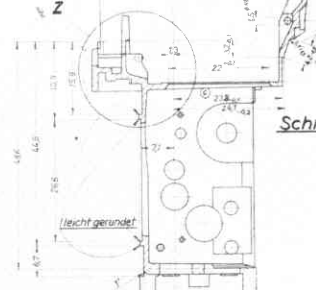
Schnitt A'-B'
M5:1



Schnitt G-H



Schnitt T-U
M5:1

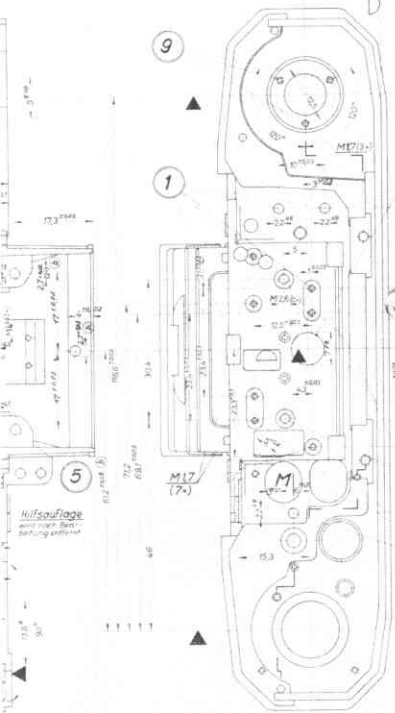


Schnitt

Schnitt R-S
M5:1



laufend



Schnitt J-K

Contarex

special

the model with interchangeable viewfinder components

With the CONTAREX special, the built-in exposure meter has been dispensed with in favour of a fully interchangeable focusing screen system. Depending on what is required, either the pentaprism attachment, or the lighthood, or the fresnel screen with split-image rangefinder and ground-glass ring, or the plain ground-glass screen can be inserted. Interchanging is both easy and quick.

For example, the lighthood permits easy viewing of the horizontal viewfinder image when the camera is attached to a microscope. The plain ground-glass screen or the clear-class screen with cross-lines facilitates focusing in photomicrography. Photographic practice abounds with problems which can be solved simply and effectively by selecting the most suitable viewfinder.

Apart from its use by the professional man, the CONTAREX special is also of great interest to the fastidious amateur photographer, who wants to become the master of every problem of artistic and experimental photography with a truly versatile camera.

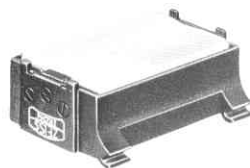
CONTAREX special with ZEISS TESSAR f/2.8, 50 mm, lighthood and plain ground-glass screen, Order No. 10.2599



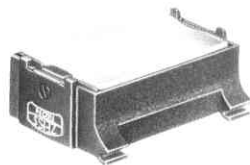
Lighthood attachment



Pentaprism attachment



Focusing screen with split-image rangefinder



Ground-glass focusing screen

Contarex

Copying and photomicrography

REPROPHOT

CONTAREX on microscope



REPROPHOT: A high-performance copying device with manifold applications. The feet of the mount can be unscrewed, so that scales of reproduction between 1:1 and 1:8.7 (size of original 210 x 297 mm [approx. 8 $\frac{1}{4}$ x 11 $\frac{3}{4}$ in]) can be obtained.

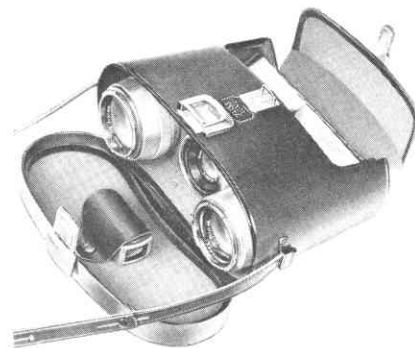
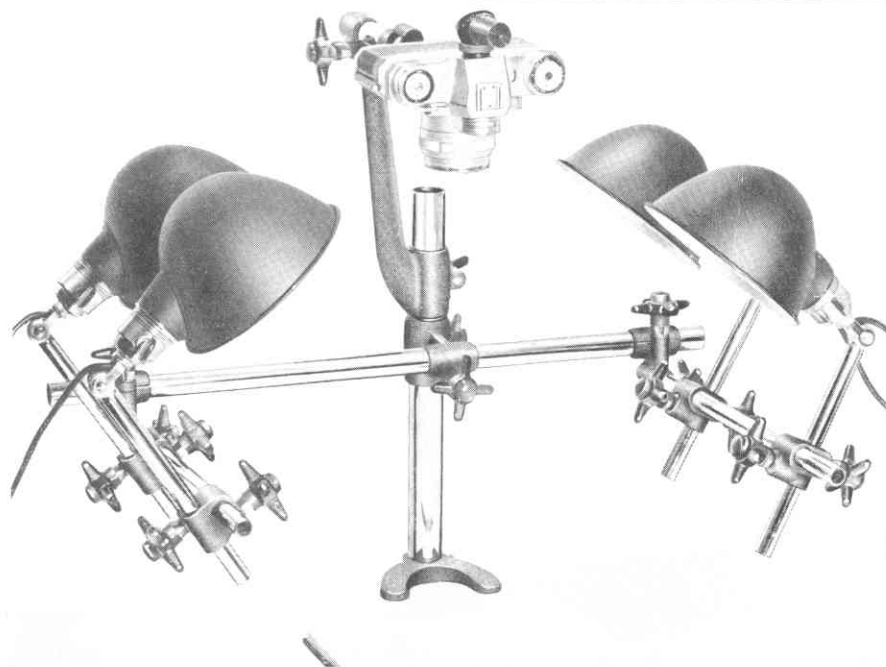
Table Copying Device: Extremely versatile for all kinds of copying. The camera support can be swung through 180° so that originals of any size can be copied. The illumination device has four reflectors and guarantees a perfectly constant and even degree of illumination which includes the corners. The CONTAREX can also be attached in an oblique position for close-ups.

Micro Attachment: Only an adapter and adapter ring are needed for attaching the CONTAREX to the microscope. The **Angle Finder** makes horizontal viewfinding possible and is also practical for copying, as well as for taking "worm's-eye view" pictures. The CONTAREX can of course also be combined with other scientific special-purpose instruments.



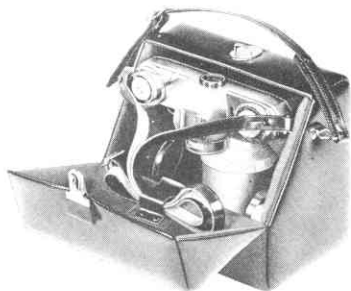


Table copying stand with illumination device



Lens Case

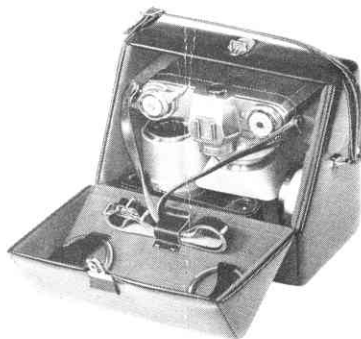
When you prefer to carry the CONTAREX in its special ever-ready case, this lens case will prove most useful. It accommodates three lenses of up to 135 mm focal length, two filters and two lens hoods. An interchangeable back can take the place of the lens hoods.



De luxe Carrying Case

for CONTAREX with or without interchangeable back, with one lens in the camera (up to 135 mm focal length) and carrying strap. When the camera lens has a focal length of up to 85 mm, even the filter and lens hood may remain attached;

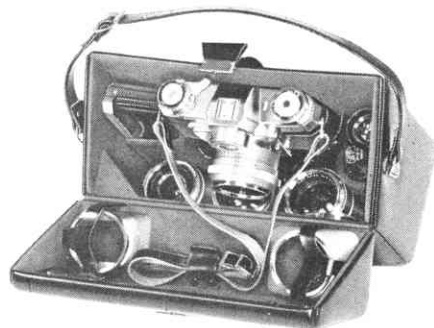
2 filters, or 1 filter and 1 Proxar lens;
1 lens hood for standard or wide-angle lens;
1 film cassette.



Small Universal Case

for CONTAREX with or without interchangeable back, with one lens in the camera (up to 135 mm focal length) and carrying strap. When the camera lens has a focal length not exceeding 85 mm, even the filter and lens hood may remain attached;

1 additional lens, up to 135 mm (with the exception of the Biogon f/4.5, 21 mm);
1 interchangeable back;
2 filters, or 1 filter and 1 Proxar lens;
1 lens hood for standard or wide-angle lens.



Large Universal Case

for CONTAREX with or without interchangeable back, with standard lens in the camera, and carrying strap;

3 additional lenses, up to 135 mm (with the exception of the Biogon f/4.5, 21 mm);

1 interchangeable back;

1 ZEISS Prism Monocular 8 x 30 B with adapter, or

1 interchangeable back;

2 filters, or 1 filter and 1 Proxar lens;

2 lens hoods (for wide-angle and standard lens);

1 cable release;

3 film cassettes.

CONTAREX Accessories

CONTAREX Cases

Ever-ready Case	20.7526
Deluxe Case	23.0203
Small Universal Case	23.0204
Large Universal Case	23.0205
Universal Case for 3 lenses and accessories	20.7842

Lenses and Viewfinders

BIOGON f/4.5, 21 mm in plastic container	11.2402
DISTAGON f/2.8, 25 mm in plastic container	11.2408
B-DISTAGON f/4, 35 mm in plastic container	11.2413
DISTAGON f/2, 35 mm in plastic container	11.2414
B-PLANAR f/2, 50 mm in plastic container	11.2412
TESSAR f/2.8, 50 mm in plastic container	11.2501
PLANAR f/1.4, 55 mm in plastic container	11.2407
SONNAR f/2, 85 mm in plastic container	11.2404
OLYMPIA-SONNAR f/2.8, 135 mm in plastic container	11.2409
SONNAR f/4, 135 mm in plastic container	11.2405
OLYMPIA-SONNAR f/4, 250 mm rapid foc. mount with grip	
automatic pre-set	11.2421

Order No.

MIOTAR f/4.5, 500 mm	11.2420
MIOTAR f/5.6, 1000 mm	11.2422
ZEISS Prism Monocular 8 x 30 B, 400 mm focal length	20.1629
Adapter ring for Prism Monocular	20.1639
Wide-angle viewfinder for BIOGON f/4.5, 21 mm	20.1500
Leather case for BIOGON f/4.5, 21 mm	20.7755
Leather case for DISTAGON 25 mm or 35 mm, PLANAR 50 mm, or TESSAR 50 mm	20.7756
Leather case for PLANAR 55 mm or SONNAR 85 mm	20.7757
Leather case for SONNAR 135 mm	20.7758
Leather case for Photo Monocular	23.1203

Filters, lens hoods, etc.

Filters (coated) G - GR - O - R - UV - IKOLOR A, B, C, and F, in 56 mm bayonet mounts for all lenses up to 135 mm	20.1012
Filters (coated) G - UV - IKOLOR C, in 67 mm screw-in mount for the 250 mm lens	20.1017
CONTAPOL polarizing filter in 56 mm bayonet mount, for all lenses up to 135 mm	20.1206
ZEISS PROXAR lens (coated), in 56 mm bayonet mount, f = 20 cm	20.0840
Lens hood, 56 mm bayonet mount, for all lenses up to 35 mm	20.0710
Leather case for above	20.7838
Lens hood, 56 mm bayonet mount, for all lenses from 50 to 135 mm	20.0712
Leather case for above	20.7837

Close-up and copying devices

Bellows focusing device	20.1617
TESSAR f/3.5, 115 mm for above	11.2417

Special effects box for above	20.1631
S-PLANAR f/4, 50 mm with leather case	11.2415
Right angle finder attachment	20.1634
Connecting ring for micro adapter	20.1616
Micro adapter	20.1628
Tripod extension for CONTAREX with interchangeable backs	20.0201
REPROPHOT, Universal Copying Unit	20.1853
Table reproduction stand	20.1850
Lighting Unit	20.1852

Other Accessories for CONTAREX models

Interchangeable film back	20.0304
Case for 1 interchangeable film back	20.7856
Case for 2 interchangeable film backs	23.0200
Eyesight correction lens from ± 0.5 to ± 5 dioptrs.	20.0504
Eyesight correction lens, special	20.0505
Take-up spool for camera	20.0001
Cassette with core and container	20.0300
100 Data Recording Strips in plastic bag	20.0202

Interchangeable Focusing Screens for CONTAREX

Split-image with ground-glass ring for 250 mm lenses	20.1311
Ground-glass screen	20.1312
Clear-glass screen with cross-lines	20.1313
Container with soft-hair brush and tweezers holding four interchangeable focusing screens	20.7074

Accessories for CONTAREX special

Lighthood attachment	20.1561
Ground-glass insert	20.1563
Pentaprism attachment	20.1560
Split-image rangefinder insert	20.1564